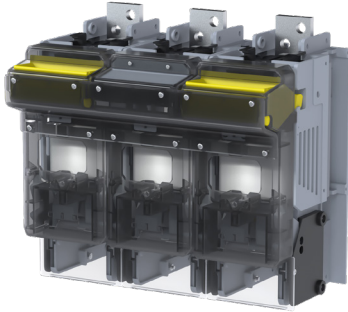


DNH1-1600/3

FUSE SWITCH DISCONNECT



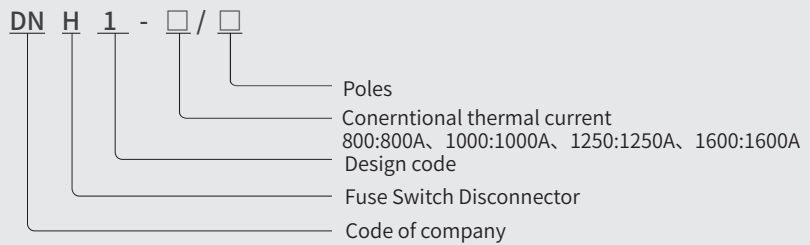
Product Profile

The DNH1-1600/3 fuse type isolation switch can be operated with load and is suitable for circuits with a rated current of 800A~1600A;

The switch has a beautiful appearance and comes with a locking device;

Complies with IEC60947-3 and GB/T 14048.3 standards.

Model & Meaning



Technical parameters

Rated current I_n (A)	800/1000/1250/1600
Agreed heating current I_{th} (A)	800/1000/1250/1600
Rated voltage U_e (V)	690
Rated insulation voltage U_i (V)	1000
额定冲击耐受电压 U_{imp} (kV)	12
Usage category	AC-21B(AC690V)/AC-22B(AC400V)/DC-21B(DC440V)
Mechanical lifespan (times)	600
Ambient temperature	-25° ~ +55°
Width (mm)	380
Height (mm)	355
Depth (mm)	240
Weight (kg)	13.5(without fuse) /22.5 (with fuse)

Dimensions (mm)

DNH1-1600

