

DNH11

FUSE SWITCH DISCONNECT



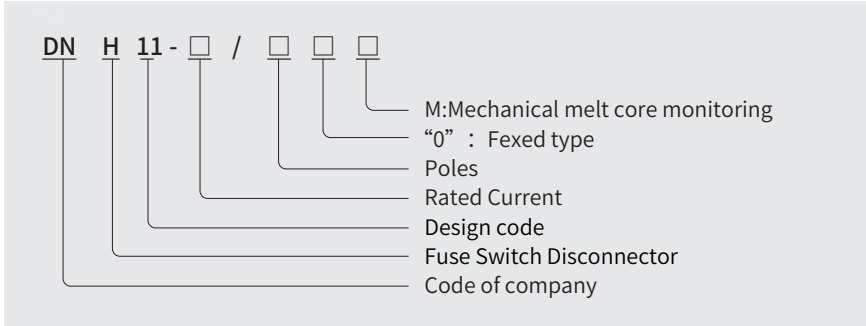
Application scope

The DNH11 fuse switch disconnect is independently designed and developed by our company, and it is a product that can be used simultaneously outdoor low-voltage fuse switch disconnect.

This product consists of a base, contacts, arc extinguishing cover, and other parts. Operation method and traditional high-voltage drop switch.

The operation method is the same, and it can be operated with an insulated rod when used outdoors.

Model & Meaning



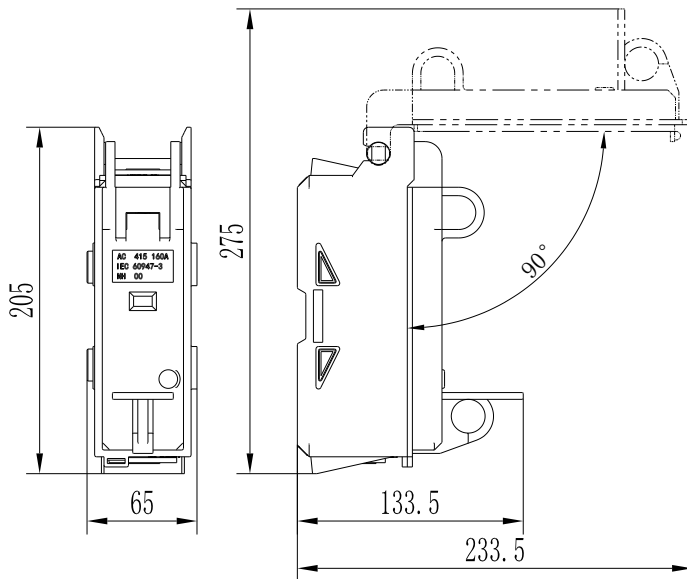
Technical Parameter

Specifications		DNH11-160	DNH11-400
Rated working voltage U_e	V	AC 415	AC 415
Rated working current I_e	A	160	400
Rated insulation voltage U_i	A	AC 1000	AC 1000
Fuse Size	V	NH00	NH1/NH2
Rated impulse withstand voltage U_{imp}	kV	12	12
Rated short-time withstand current	kA/1s	10	10
Rated frequency	Hz	50/60	50/60
Poles		1P/2P/3P/4P	1P/2P/3P/4P
Usage category (with fused)		AC-22B	AC-22B
Wiring size	mm ²	16~95	95~185
External dimensions	mm	IP23	IP23
Protection grade		315×92×150	205x65x133.5
Working conditions	Air temperature	-5°C ~+ 55°C	
	Altitude	≤3000m	
	Installation category and pollution level	III	
	Note: If expected to be used under conditions where the ambient air temperature is above +55 °C or below -5 °C, the user should explain to the manufacturer.		

DNH11 FUSE SWITCH DISCONNECT

Dimensions (mm)

DNH11-160



DNH11-400

