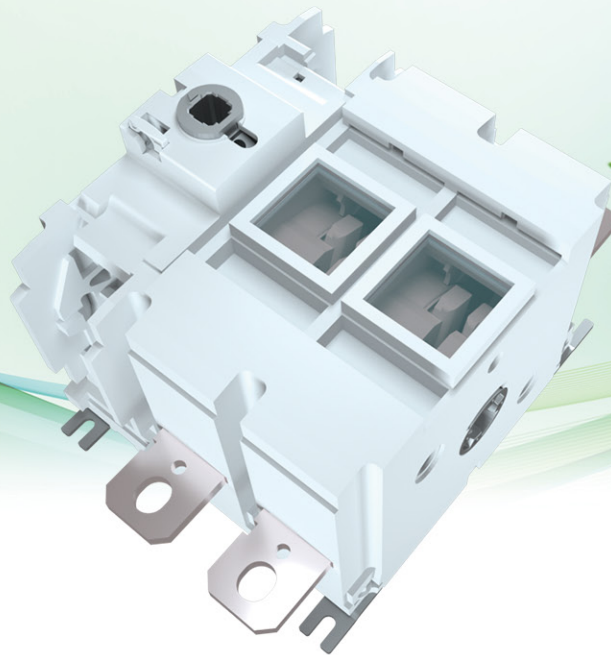


DNH50 Load Isolation Switch



Suitable range

HGL series load isolation switch mainly suitable for DC rated voltage up to 1500V, rated current up to 630A. The switch is used in the infrequent making and breaking circuit.

Model and Meaning

DNH	50	-	160	/	2
↓	↓		↓		↓
Company code	Design No.		Rated current		Pole

DNH50

Load Isolation Switch

Usage environment

* Ambient temperature: $-5^{\circ}\text{C} \sim 40^{\circ}\text{C}$, relative humidity is not larger than 95%

* Altitude: shall not exceed 2000m.

* No explosive dangerous medium environment.

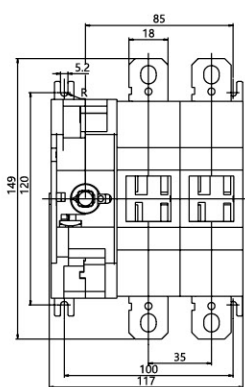
* No rain and snow attack environment.

Note: if the load isolation switch is expected to be used in the condition that the ambient temperature is higher than $+40^{\circ}\text{C}$ or is lower than -5°C , customers should inform to the manufactory.

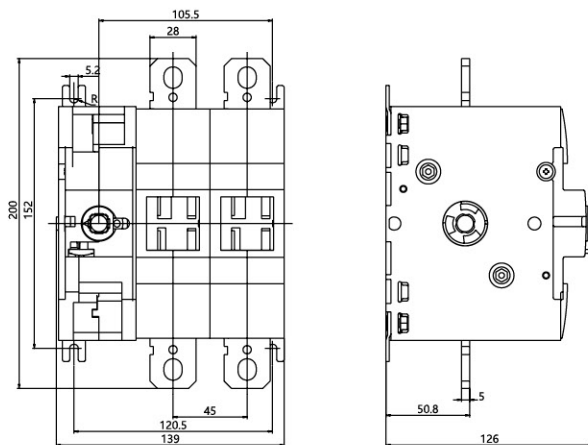
Technical Parameter

Model NO.	DNH50-160	DNH50-250	DNH50-315	DNH50-400	DNH50-500	DNH50-630
Rated Current I_e	160A	250A	315A	400A	500A	630A
Rated Voltage U_e	DC1500V	DC1500V	DC1500V	DC1500V	DC1500V	DC1500V
Rated insulation voltage U_i	1500V	1500V	1500V	1500V	1500V	1500V
Use category	DC-21B/DC-PV2	DC-21B/DC-PV2	DC-21B/DC-PV2	DC-21B/DC-PV2	DC-21B/DC-PV2	DC-21B/DC-PV2
Dielectric strength	3820V	3820V	3820V	3820V	3820V	3820V
Rated Impulse Withstand Voltage	12kV	12kV	12kV	12kV	12kV	12kV
Rated short-time switching current	5kA	5kA	5kA	8kA	8kA	8kA
Rated short-time making capacity	10kA	10kA	10kA	10kA	10kA	10kA
Mechanical Durability	7800	7800	7800	4800	4800	4800
Electrical Durability	200	200	200	200	200	200

Shape and mounting dimensions



DNH50-160 ~ 315安装及外形尺寸



DNH50-400 ~ 630安装及外形尺寸